



E_D-2W & F_D-2W Series

2W, FIXED INPUT, ISOLATED & UNREGULATED DUAL/SINGLE OUTPUT DC-DC CONVERTER

Multi-country patent protection RoHS

FEATURES

High Efficiency up to 85%
 3000VDC Isolation
 DIP Package
 Internal SMD construction
 No Heatsink Required
 Temperature Range: -40°C to +85°C
 No External Component Required
 Industry Standard Pinout
 RoHS Compliance

APPLICATIONS

The E_D-2W & F_D-2W Series are specially designed for applications where a group of polar power supplies are isolated from the input power supply in a distributed power supply system on a circuit board.

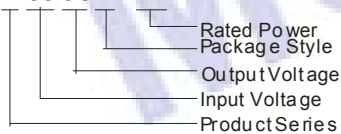
These products apply to:

- 1) Where the voltage of the input power supply is fixed (voltage variation $\leq \pm 10\%$);
- 2) Where isolation is necessary between input and output (isolation voltage $\leq 3000\text{VDC}$);
- 3) Where the regulation of the output voltage and the output ripple noise are not demanding.

Such as: purely digital circuits, ordinary low frequency analog circuits, and IGBT power device driving circuits.

MODEL SELECTION

E0505D-2W



MORNSUN Science& Technology Ltd.

Address: 2th floor 6th building, Hangzhou Industrial District, Guangzhou, China
 Tel: 86-20-38601850
 Fax: 86-20-38601272
<http://www.mornsun-power.com>

PRODUCT PROGRAM

Part Number	Input		Output			Efficiency (% , Typ)	Certificate		
	Voltage (VDC)		Voltage (VDC)	Current (mA)					
	Nominal	Range		Max	Min				
E0505D-2W	5	4.5-5.5	±5	±200	±20	82	UL		
E0509D-2W			±9	±111	±12	83	UL		
E0512D-2W			±12	±83	±9	84	UL		
E0515D-2W			±15	±67	±7	82	UL		
F0503D-2W*			3.3	400	40	74			
F0505D-2W			5	400	40	81	UL		
F0509D-2W			9	222	23	83	UL		
F0512D-2W			12	167	17	83	UL		
F0515D-2W			15	133	14	83	UL		
E1205D-2W			12	10.8-13.2	±5	±200	±20	80	UL
E1209D-2W	±9	±111			±12	83	UL		
E1212D-2W	±12	±83			±9	85	UL		
E1215D-2W	±15	±67			±7	82	UL		
F1205D-2W	5	400			40	80	UL		
F1209D-2W	9	222			23	82	UL		
F1212D-2W	12	167			17	83	UL		
F1215D-2W	15	133			14	83	UL		
E2405D-2W	24	21.6-26.4			±5	±200	±20	82	UL
E2409D-2W					±9	±111	±12	82	UL
E2412D-2W			±12	±83	±9	85	UL		
E2415D-2W			±15	±67	±7	85	UL		
F2405D-2W			5	400	40	80	UL		
F2409D-2W			9	222	23	82	UL		
F2412D-2W			12	167	17	83	UL		
F2415D-2W			15	133	14	84	UL		
F2424D -2W*			24	83	9	85			

*Designing

COMMON SPECIFICATIONS

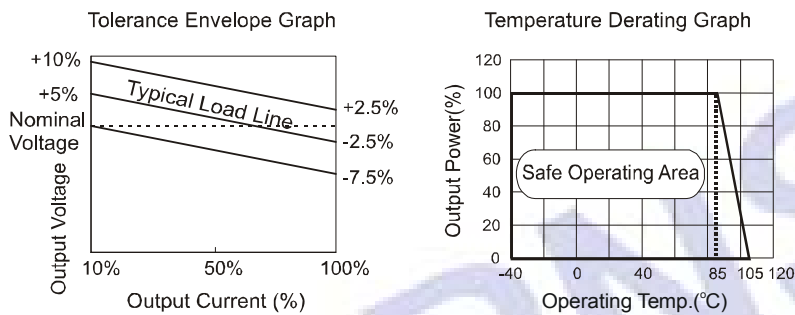
Item	Test conditions	Min	Typ	Max	Units
Operating Temp. Range		-40		85	°C
Storage Temp. Range		-55		125	
Storage humidity range				95	%
Cooling		Free air convection			
Temp. rise at full load			15	25	°C
Lead temperature	1.5mm from case for 10 seconds			300	
Isolation voltage	Tested for 1 minute and 1 mA max	3000			VDC
Isolation resistance	Test at 500VDC	1000			MΩ
Short circuit protection				1	s
Case material		Plastic (UL94-V0)			
MTBF		3500			K hours

OUTPUT SPECIFICATIONS						
Item	Test conditions		Min	Typ	Max	Units
Output power			0.2		2	W
Line regulation	For Vin change of ±1%	(3.3 output)			±1.5	%
		(others output)			±1.2	
Load regulation	10% to 100% load	(3.3 output)		12	20	%
		(5V output)		10	15	
		(9V output)		8.3	10	
		(12V output)		6.8	10	
		(15V output)		6.3	10	
Output voltage accuracy	See tolerance envelope graph					
Temperature drift	100% full load			0.03	%/°C	
Ripple & Noise*	20MHz Bandwidth		75	150	mVp-p	
Switching frequency	Full load, nominal input		70		KHz	

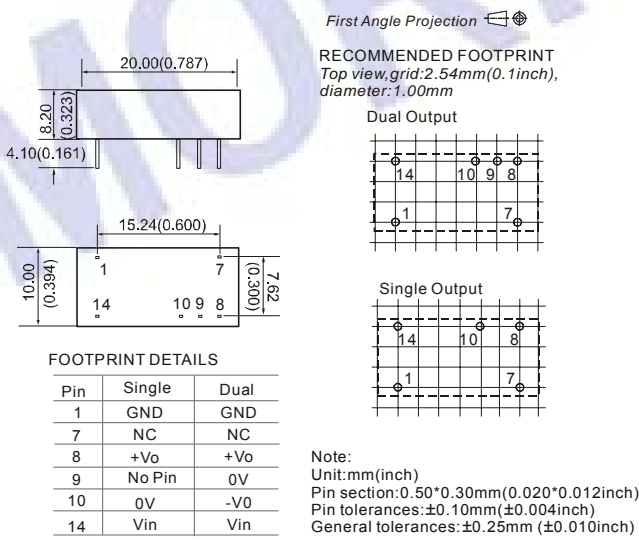
*Test ripple and noise by "parallel cable" method. See detailed operation instructions at Testing of Power Converter section, application notes.

Note:
 1. All specifications measured at TA=25°C, humidity<75%, nominal input voltage and rated output load unless otherwise specified.
 2. Dual output models unbalanced load: ±5%.

TYPICAL CHARACTERISTICS



OUTLINE DIMENSIONS & PIN CONNECTIONS

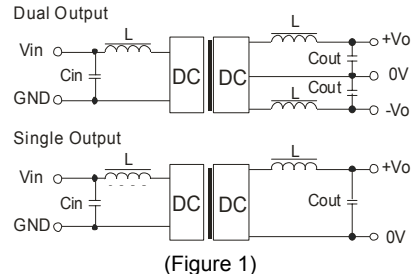


APPLICATION NOTE

Requirement on output load
 To ensure this module can operate efficiently and reliably, During operation, the minimum output load is **not less than 10%** of the full load, and that **this product should never be operated under no load!** If the actual output power is very small, please connect a resistor with proper resistance at the output end in parallel to increase the load, or use our company's products with a lower rated output power.

Overload Protection
 Under normal operating conditions, the output circuit of these products has no protection against overload. The simplest method is to connect a self-recovery fuse in series at the input end or add a circuit breaker to the circuit.

Recommended circuit
 If you want to further decrease the input/output ripple, an "LC" filtering network may be connected to the input and output ends of the DC/DC converter, see (Figure 1).



It should also be noted that the inductance and the frequency of the "LC" filtering network should be staggered with the DC/DC frequency to avoid mutual interference. However, the capacitance of the output filter capacitor must be proper. If the capacitance is too big, a startup problem might arise. For every channel of output, provided the safe and reliable operation is ensured, the recommended capacitance of its filter capacitor sees (Table 1).

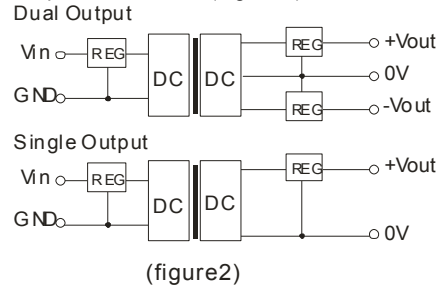
EXTERNAL CAPACITOR TABLE (Table 1)

Vin (VDC)	Cin (uF)	Single Vout (VDC)	Cout (uF)	Dual Vout (VDC)	Cou (uF)
5	4.7	3.3/5	10	±5	4.7
12	2.2	9	4.7	±9	2.2
24	1	12	2.2	±12	1
-	-	15	1	±15	1

It's not recommend to connect any external capacitor in the application field with less than 0.5 watt output.

Output Voltage Regulation and Over-voltage Protection Circuit

The simplest device for output voltage regulation, over-voltage and over-current protection is a linear voltage regulator with overheat protection that is connected to the input or output end in series (Figure 2).



No parallel connection or plug and play.